

HEMA

Road Plate Yoke

The road plate yoke is designed for a working pressure of 170-200 bar, making it applicable to almost all types of auto cranes.

The road plate yoke is prepared for mounting by suspension or rotator with mounting flanges 140x140xC17

It is a tool that facilitates and streamlines the work with road plates.

The HEMA road plate yoke can be mounted on a crane with a rotator, making it easier and safer for a person to handle the driving plates without leaving the crane's operating unit.

The driving plate yoke is adjustable in width, making it possible to handle the most used road plates on e.g. 2 x 3 m.

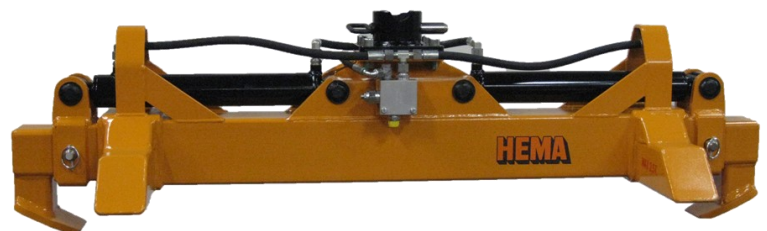
The 1,5 T is designed to be used on road plates with a width of 1500 mm to 2500 mm, and the 2,5 T for plates with a width of 1500 mm to 3000 mm.

The yoke is developed on the basis of the experience made from companies within the transportation industry and their experience with the handling of these products.

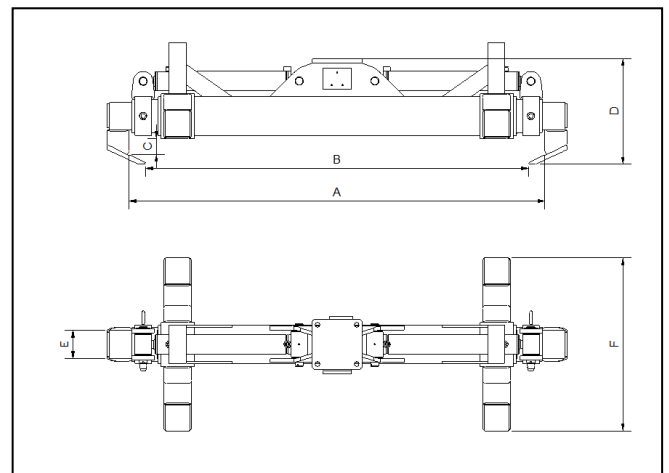
Road Plate Yoke 2550 1,5 T with 1 hydraulic and 1 manual extension



Road Plate Yoke 3040 V2 2,5 T with 2 hydraulic cylinders and 2 manual extensions



Road Plate Yoke 3040 V2 2,5 T with 2 hydraulic cylinders



Product nr.	TYPE	Max load Kg.	A mm	B mm	C mm	D mm	E mm	F mm	Weight kg
3050 1500	Kørepladeåg 2550 1,5 T	1500	1450 - 2665	1330 - 2545	50	370	80	740	150
3050 1530	Kørepladeåg 3040 V2 2,5 T	2500	1480 - 3160	1360 - 3040	60	378	120	620	190