

# HEMA

## Log Grapple Model TG28 - TG55

The log grapple is designed for a working pressure of 250 bar, making it applicable for almost all types of larger cranes as well as medium size excavators.

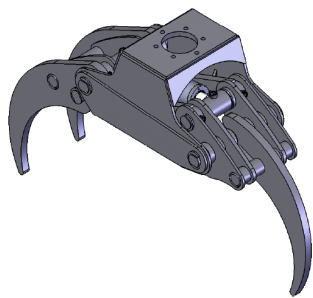
The log grapples are designed for handling trawls and other long goods.

The TG series comes fitted with individually customized links for rotators or mounting for certain models.

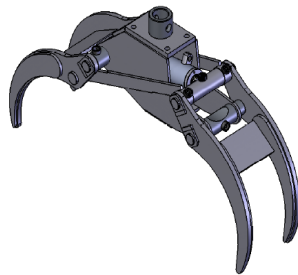
The S-models are reinforced compared to the regular TG models.

Some versions are also delivered as the SR3 / SR4 models that have 3 and 4 teeth and no blades. They are designed for handling of ream, stone and similar materials.

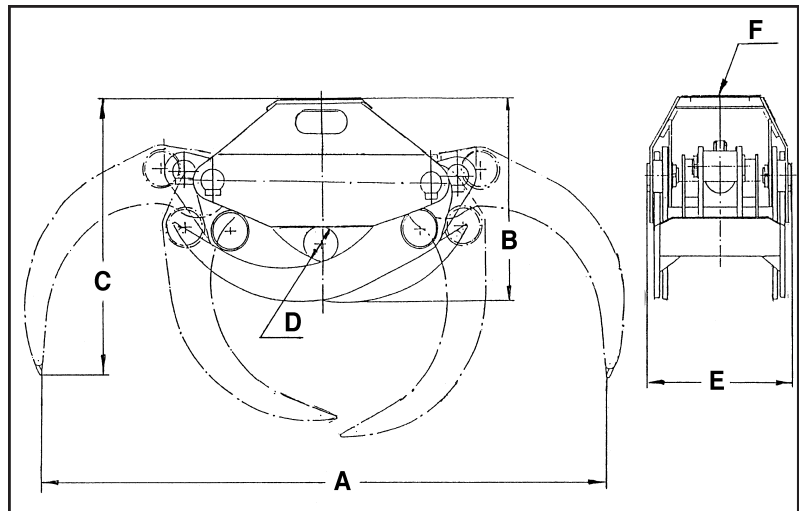
A sturdy design enables versatile and more demanding applications.



TG SR3



TG SR4



TYPE	TG28	TG28S	TG28SR4	TG35	TG35S	TG35SR4	TG42	TG42S	TG42SR4	TG55	TG55S	TG55SR4
Product no. <b>3018 +</b>		4029		4034	4035							
Weight Kg.	200	256	260	270	310	330	346	366	415	530	682	760
Max load Kg.	3000	5000	5000	3500	5000	7000	5000	7000	8000	7000	10000	10000
Grip area m <sup>2</sup>	0,30	0,30	0,30	0,38	0,38	0,38	0,50	0,50	0,50	0,70	0,70	0,70
Max pressure, bar	250	250	250	250	250	250	250	250	250	250	250	250
Rec. oil flow l/min	60	60	60	90	70	70	90	90	90	90	90	90
Closing force kN	16,6	16,6	16,6	14	17,5	17,5	21,8	21,8	21,8	25	25	25
A Open. meas. mm	1540	1540	1540	1900	1900	1900	1900	1900	1900	2450	2450	2450
B Height, Closed	530	540	540	590	590	590	675	675	675	790	800	800
C Height, Open	785	785	735	835	835	800	970	970	920	1040	1050	990
D Min. clamp dia	90	90	90	65	65	65	100	100	100	150	150	150
E Max ext. width	416	512	512	502	522	522	513	533	533	563	632	632

Subject to print errors & changes 2014.01.29



**HEMA**

K.S.M. Kragelund ApS.  
 Bøggallevej 19, Kragelund, DK-8723 Løsning  
 Tlf. + 45 75893711 - Fax. + 45 75893709  
 Mail: hema@ksm-hema.dk / www.hema.world

Manufacturing and sales of  
**HEMA Crane Equipment**  
 And Mudguards

