

HEMA

Log Grapple

Model TG08 - TG25

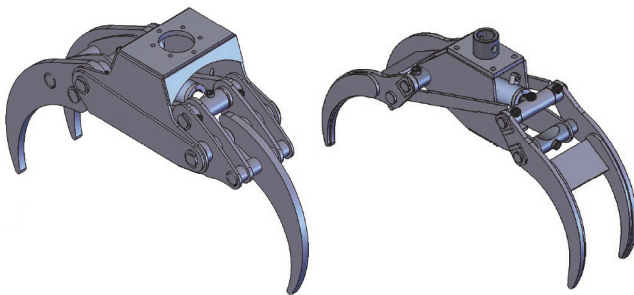
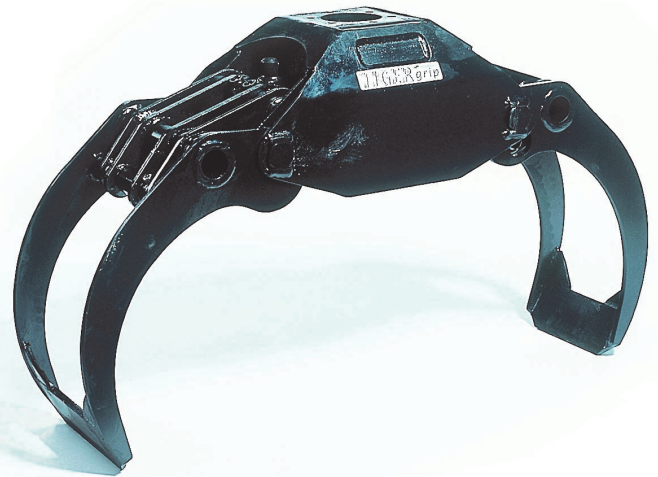
The log grapple is designed for a working pressure of 160 - 200 bar, making it applicable for almost all types of cranes and excavators.

The log grapples are designed for handling trawls and other long goods.

The TG series comes fitted with individually customized suspensions for rotators or mounting for certain models.

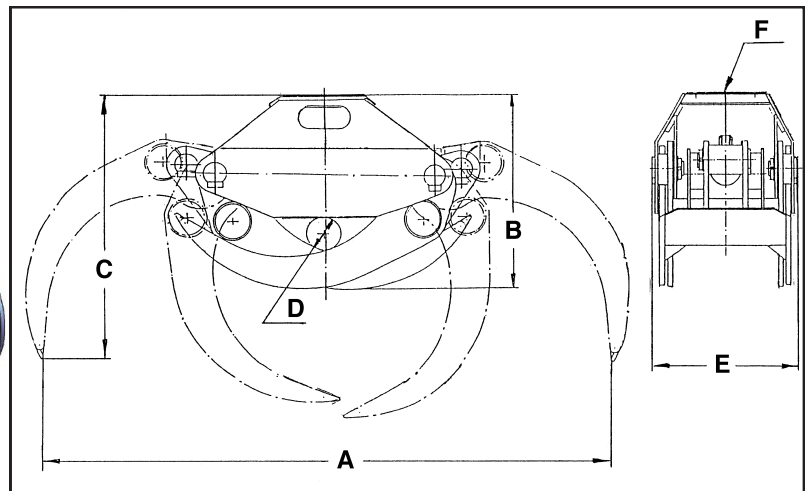
The S-models are reinforced compared to the regular TG models.

The R3 / R4 models have 3 and 4 teeth. They have no blades and are designed for reams and similar materials.



TG SR3

TG SR4



| TYPE | TG08 | TG12 | TG16 | TG16S | TG16SR4 | TG19 | TG 22 | TG22S | TG22Pro | TG23 | TG23S | TG25 | TG25S | TG25SR3 | TG25SR4 |
|--------------------------|------|------|------|-------|---------|------|-------|-------|---------|------|-------|------|-------|---------|---------|
| Product nr 3018 | 4008 | 4012 | 4016 | 4018 | 4017 | 4019 | 4022 | 4024 | 4025 | | | | 4026 | | |
| Weight | 25 | 44 | 50 | 60 | 58 | 74 | 98 | 112 | 125 | 120 | 130 | 140 | 171 | 190 | 190 |
| Max belastning | 300 | 600 | 1000 | 1100 | | 1500 | 1600 | 1700 | 1700 | 1600 | 2000 | 2000 | 2500 | | |
| Grip area m ² | 0,08 | 0,12 | 0,16 | 0,16 | 0,16 | 0,19 | 0,22 | 0,22 | 0,20 | 0,23 | 0,23 | 0,25 | 0,25 | 0,25 | 0,25 |
| Max pressure, bar | 160 | 200 | 200 | 200 | 200 | 200 | 200 | 200 | 200 | 200 | 200 | 200 | 200 | 200 | 200 |
| Rec. oil flow l/ | 15 | 30 | 40 | 40 | 40 | 40 | 50 | 50 | 20 | 50 | 50 | 50 | 50 | 50 | 50 |
| Clamp power | 4 | 8 | 9 | 9 | 9 | 10 | 13,5 | 13,5 | 11,6 | 13,5 | 13,5 | 11 | 11 | 12,6 | 12,6 |
| A Åb.mål mm | 690 | 740 | 925 | 925 | 925 | 1070 | 1290 | 1290 | 1228 | 1290 | 1290 | 1390 | 1390 | 1225 | 1225 |
| B height, shut | 295 | 305 | 405 | 405 | 405 | 450 | 520 | 520 | 440 | 470 | 470 | 508 | 508 | 520 | 520 |
| C height, open | 485 | 595 | 620 | 620 | 580 | 720 | 670 | 670 | 618 | 620 | 620 | 782 | 782 | 785 | 785 |
| D Min. clamp dia | 20 | 35 | 40 | 40 | 40 | 45 | 90 | 90 | 60 | 50 | 50 | 40 | 40 | 50 | 50 |
| E Max udv. | 224 | 263 | 287 | 301 | 301 | 291 | 310 | 310 | 432 | 400 | 410 | 300 | 310 | 423 | 423 |

Subject to print errors and changes 2011.10.21



HEMA
 K.S.M. Kragelund ApS.
 Bøgballevej 19, Kragelund, DK-8723 Løsning
 Tlf. + 45 75893711 - Fax. + 45 75893709
 Mail: hema@ksm-hema.dk / www.hema.world

**Manufacturing and sales of
 HEMA Crane Equipment,
 and Mufguards**

