

HEMA

Excavator Grapple Type SJC2

The grapple is designed for a working pressure of 200-300 bar, making it applicable to almost all types of cranes.

Max. pressure: 300 bar.

The grapple's cylinder is fitted with a protective shield that minimizes damage to the piston rods.

The grapple offers the possibility to work across the direction of the machine and for collecting material.

Wear resistant steel has been mounted underneath the grapple.

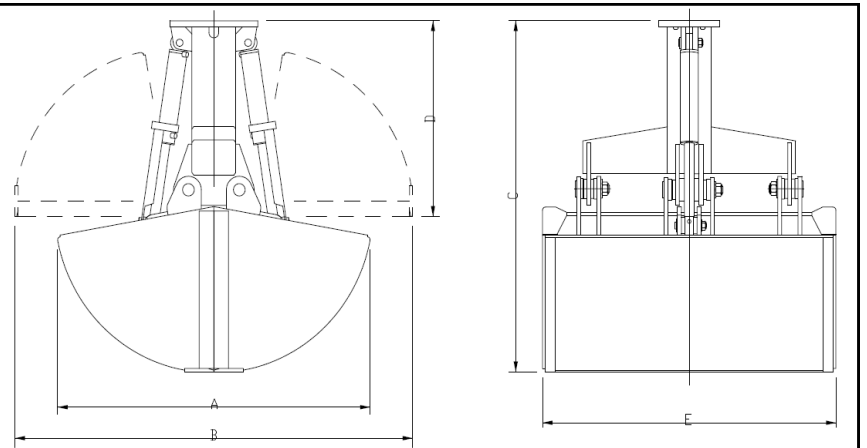
The grapple is prepared for the installation of hydraulic and mechanical swivels.



SJC2 M2 1200 L.



SJC2 450 L.



Product no.	TYPE	Contents ltr.	A mm	B mm	C mm	D mm	E mm	Weight kg
3040 5810	SJC2-450	450	1600	2040	1720	1050	630	630
3040 5814	SJC2-750	750	1600	2040	1720	1050	1030	720
3040 5818	SJC2-1000	1000	1600	2040	1720	1050	1365	790
3040 5826	SJC2-M2-1200	1200	1840	2020	1705	955	1638	1100