

HEMA

Container Grapple CTGD 35/60 med turn-actuator.

The HEMA container grapple is a tool that facilitates and makes the work with 190 – 240 L plastic containers and 200 L drums with waste more efficient.

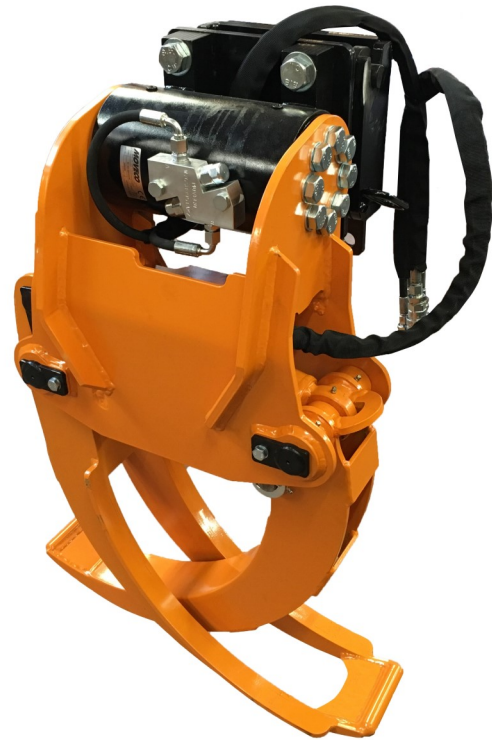
The container grapple can also be used for handling dead animals.

The CTGD is tilted using a turn actuator that can tip the grapple 180 degrees. The 180 degree range facilitates the ability to empty the container easy and quickly.

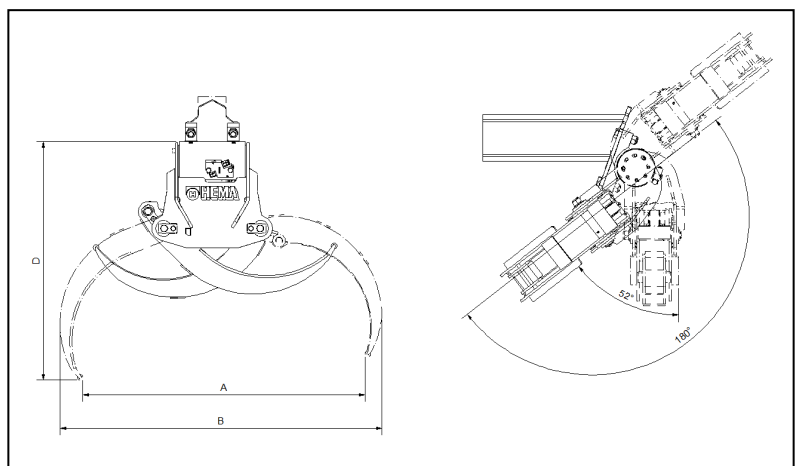
The actuator occupies very little space and with increased tilt force on the unit, the containers are handled and emptied easier.

The few components minimize the amount of maintenance.

The HEMA container grapple can be mounted on the crane through an insert tube that goes inside the crane arm and is easily dismantled so that the crane can be used for other regular crane work.



**HEMA Container Grapple
CTGD 35/60 with turn-actuator**



Product no.	TYPE	Bar	A mm	B mm	C mm	D mm	E mm	Tip-angle	Weight kg
3010 5100	CTGD 35-60 180	200	1130	1335	1016	1090	210/100	180°	95