

HEMA

Waste Grapple AG90

The grapple is designed for a working pressure of 170-200 bar, making it applicable for almost all types of cranes.
Max. pressure 200 bar.

The horizontal and well-protected cylinder provides an extra low construction height, large closing force and quick opening.
The cylinder is adjustable as compensation for wear.

Individual customization of link.

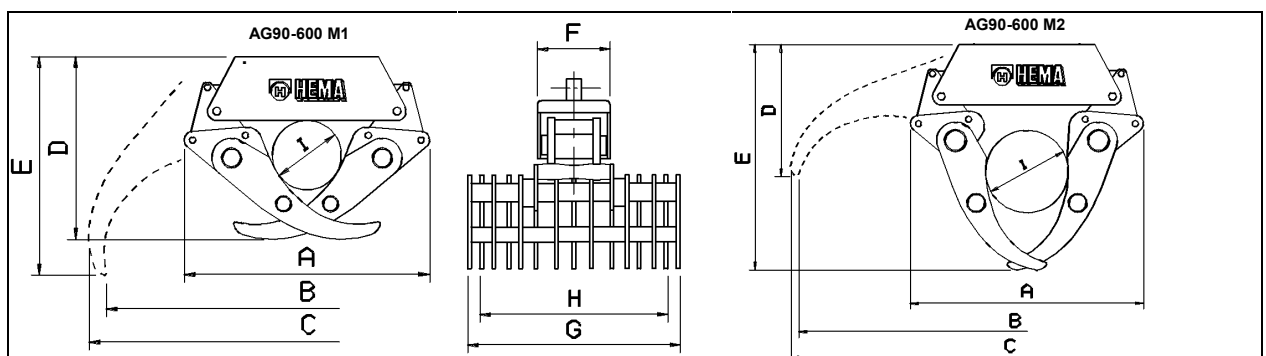
The waste grapples lower parts can be customized individually.

HEMA Crane Equipment has a wide range of grapples for many different tasks.

The grapples can also be delivered as electric-hydraulic grapples.



Waste Grapple AG90-600



Product nr.	TYPE	Bar	I mm	A mm	B mm	C mm	D mm	E mm	F mm	G mm	H mm	Weight kg
3015 5525	AG90-600 M1	200	261	926	1520	1615	695	820	300	880	778	350
3015 5530	AG90-600 M2	200	327	926	1980	2060	573	953	300	880	778	350
3015 5550	AG90-900 M2	200	327	926	1980	2060	573	953	300	1380	1180	395