

Pallet Fork Standard 1 - 3 Tons

The 21-2 type pallet fork has a maximum SWL on respectively 1 ton, the type 22-3MS and 23-3MS have a maximum SWL on respectively 2 & 3 ton.

The 21-2 type is delivered with thin pipe forks where 22-3 and 23-3 are delivered with massive forks that give a lower fork height, larger strength and longevity in correlation to abrasion.

The HEMA 2 & 3 T. standard pallet forks are all delivered with adjustable clearance height and spring locks that are adjustable in width. There are 3 lifting points making the pallet forks applicable for e.g. EUR pallets and brick pallets, to find the correct balance point.

The 22-3M can be used as a brick pallet fork or as a standard pallet fork depending on the fork's mutual placement.

The 23-3MS is at its ground clearance of 2250 mm applicable when handling wood pallets.

The HEMA pallet forks are delivered with hook or standard link.

Forklift Pockets for Pallet Fork

The pallet forks can be mounted with forklift pockets that facilitate the handling of the pallet forks when they are to be moved from and on the truck.

The forklift pockets are easily fitted to both the 2 and 3 ton pallet forks.

The forklift pockets protect against damage on the load shackle and reduces the risk of losing and damaging the pallet forks by truck handling.

Lifting Stops for Pallet Fork

The pallet fork can be mounted with lifting stops for the furthest lifting point.

Easier placement of lifting brackets when handling pallet with the center load point appropriate for lifting point 2 on the pallet fork.

Easily mounted without the need for tools.



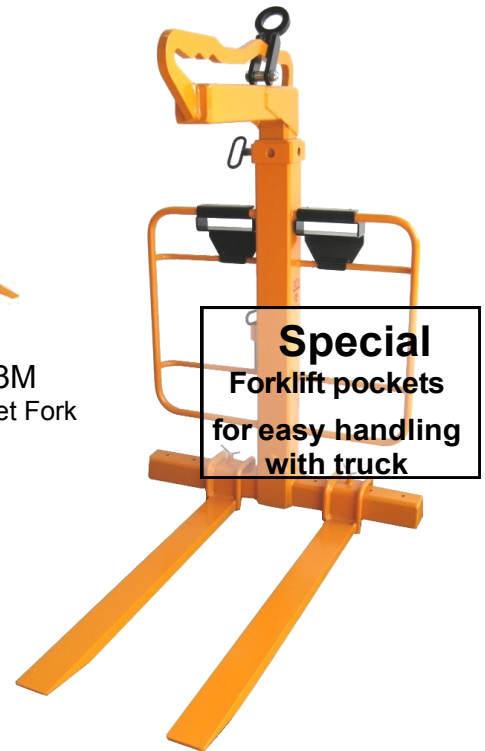
Type 23-3 Std.
3 Tons Standard Pallet Fork



Type 21-2 Std.
1 Tons Mini Pallet Fork



Type 22-3M
2 Tons Brick Pallet Fork



**Special
Forklift pockets
for easy handling
with truck**

**Special
Stops for
furthest lifting
point for stone
pallets**



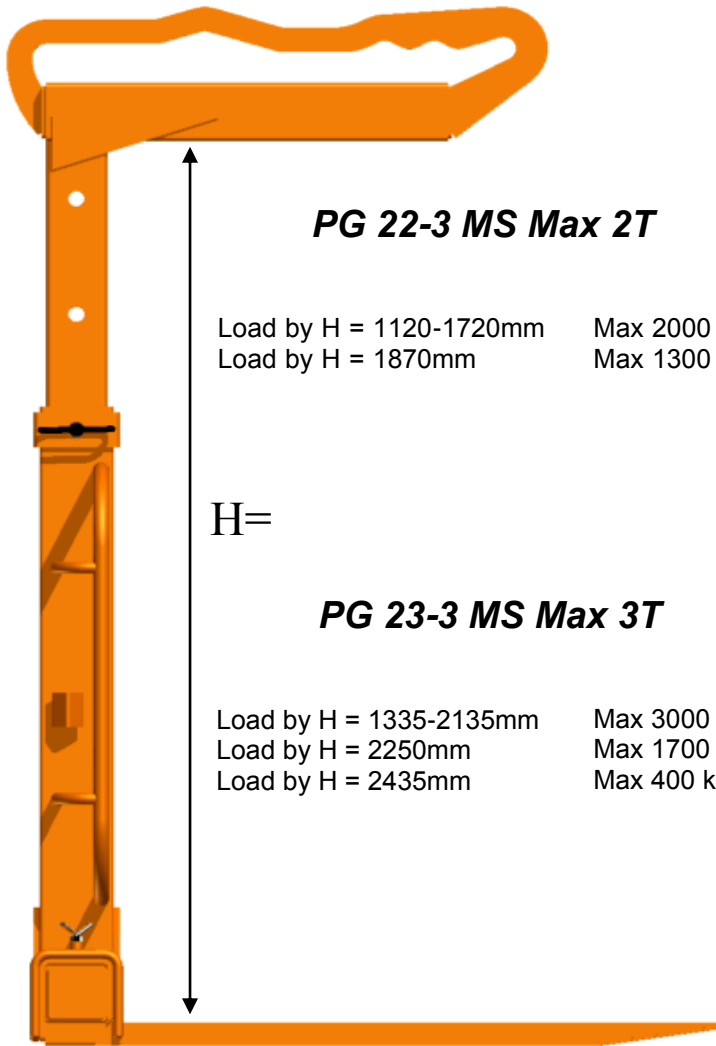
Specifications on backside



HEMA
K.S.M. Kragelund ApS.
Bøgballevej 19, Kragelund, DK-8723 Løsning
Tel. + 45 75893711 - Fax. + 45 75893709
hema@ksm-hema.dk / www.hema.world

Manufacturing and sales of
HEMA Crane Equipment,
and mudguards





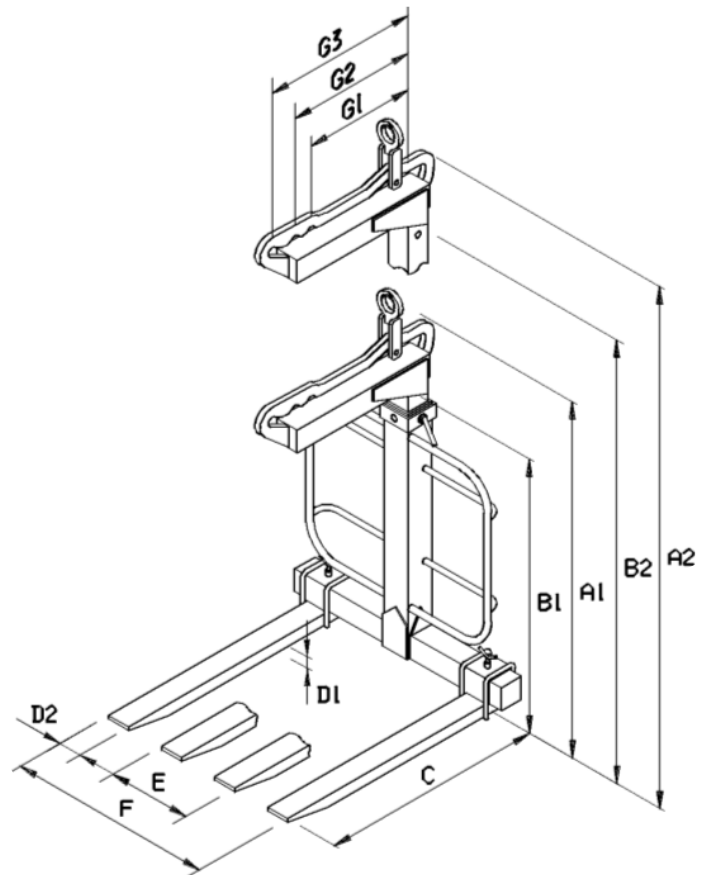
PG 22-3 MS Max 2T

Load by H = 1120-1720mm Max 2000 kg
 Load by H = 1870mm Max 1300 kg

H=

PG 23-3 MS Max 3T

Load by H = 1335-2135mm Max 3000 kg
 Load by H = 2250mm Max 1700 kg
 Load by H = 2435mm Max 400 kg



Product Nr.	TYPE	Fork- Length mm (C)	Max Load See above	A1 mm	A2 mm	B1 mm	B2 mm	D 1 mm	D 2 mm	E mm	F mm	G 1 mm	G 2 mm	G 3 mm	Weight kg
3070 7210	PG 21-2 800 Std. 1T pallet fork	800	1 Ton	1210		950		25	80		550	310	405		55
3070 7230	22-3 MS 1000 Std. 2T. pallet fork	1000	2 Tons 1300 Kg.	1530	2120 2270	1120	1720 1870	35	100	380	1000	450	535	650	165
3070 7235	22-3 MS 1200 Std. 2T. pallet fork	1200	2 Tons 1300 Kg.	1530	2120 2270	1120	1720 1870	35	100	380	1000	450	535	650	175
3070 7240	22-3 M 900 2T. Brick pallet fork	900	2 Tons 1300 Kg.	1530	2120 2270	1120	1720 1870	35	50	220	980	450	535	650	165
3070 7250	23-3 MS 1000 Std. 3T. pallet fork	1000	3 Tons 1700 Kg. 400 Kg.	1735	2535 2650 2835	1335	2135 2250 2435	40	100	380	1000	450	535	650	215
3070 7270	23-3 MS 1200 Std. 3T. pallet fork	1200	3 Tons 1700 Kg. 400 Kg.	1735	2535 2650 2835	1335	2135 2250 2435	40	100	380	1000	450	535	650	230
3070 7280	23-3 M 900 3T. Brick pallet fork	900	3 Tons 1700 Kg. 400 Kg.	1735	2535 2650 2835	1335	2135 2250 2435	40	50	220	980	450	535	650	215

Subject to print errors and changes 2015.02.23



HEMA

K.S.M. Kragelund ApS.
 Bøgballevej 19, Kragelund, DK-8723 Løsning
 Tel. + 45 75893711 - Fax. + 45 75893709
 hema@ksm-hema.dk / www.hema.world

Manufacturing and sales of
HEMA Crane Equipment,
 and mudguards.

